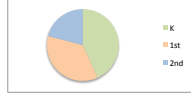


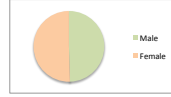
**Citizens of the World Kansas City - Board of Directors Meeting
Executive Director's Report - Dashboard
February 21, 2018**

Diversity

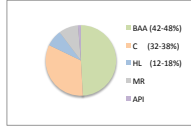
Grade		
K	97	43%
1st	80	36%
2nd	47	21%
	224	100%



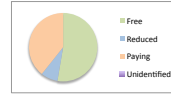
Gender		
Male	111	50%
Female	113	50%
	224	100%



Ethnicity		
BAA (42-48%)	110	49%
C (32-38%)	74	33%
HL (12-18%)	17	8%
MR	20	9%
API	3	1%
	224	100%



Economic Status		
Free	118	53%
Reduced	18	8%
Paying	88	39%
Unidentified	0	0%
	224	100%



GOAL: 50% FRL Currently: 61%

Average Daily Attendance		
08.14.2017 thru 01.12.2018		
Whole school:		Per Pupil:
	92.94%	90-100% 78.2%
		80-90% 15.1%
		70-80% 4.2%
		60-70% 2.3%
		50-60% 0.0%
		Below 50% 0.0%
		TOTAL 100%

GOAL: 90% attend 90%

Special Education		
IEP/504	19	8%

ELL		
K	9	50%
1st	8	44%
2nd	1	6%
	18	100%

Students entering CWCKC midyear	
Moved to area	11
Dissatisfied - Old School	14
Late Enrollment	10
TOTAL	35

Students exiting CWCKC midyear	
Transportation	5
Dissatisfied	4
Wait List	7
Homeschooling	2
Work/Move	18
Developmental Wait	1
TOTAL	37

Turnover rates					
as of Feb 16, 2017			as of Feb 16, 2018		
In	Out	Total	In	Out	Total
15.32%	15.32%	30.65%	15.49%	16.37%	31.86%

Understanding

T2 Academic Data - NWEA and Fountas & Pinnell

Review of T2 academic data - growth and achievement
Year to year: 2017-2018 T1-T2; current levels

Presentation by Principal Doug Smith

Connection

CWCS Strategic Initiatives and Ongoing Support in Kansas City

Overview of new and ongoing strategic initiatives across regions and specific to Kansas City support

Presentation by Kriste Dragon, CEO, Vanessa Rodriguez, Chief Program Officer, and Alison Kerr, ED Learning and Innovation